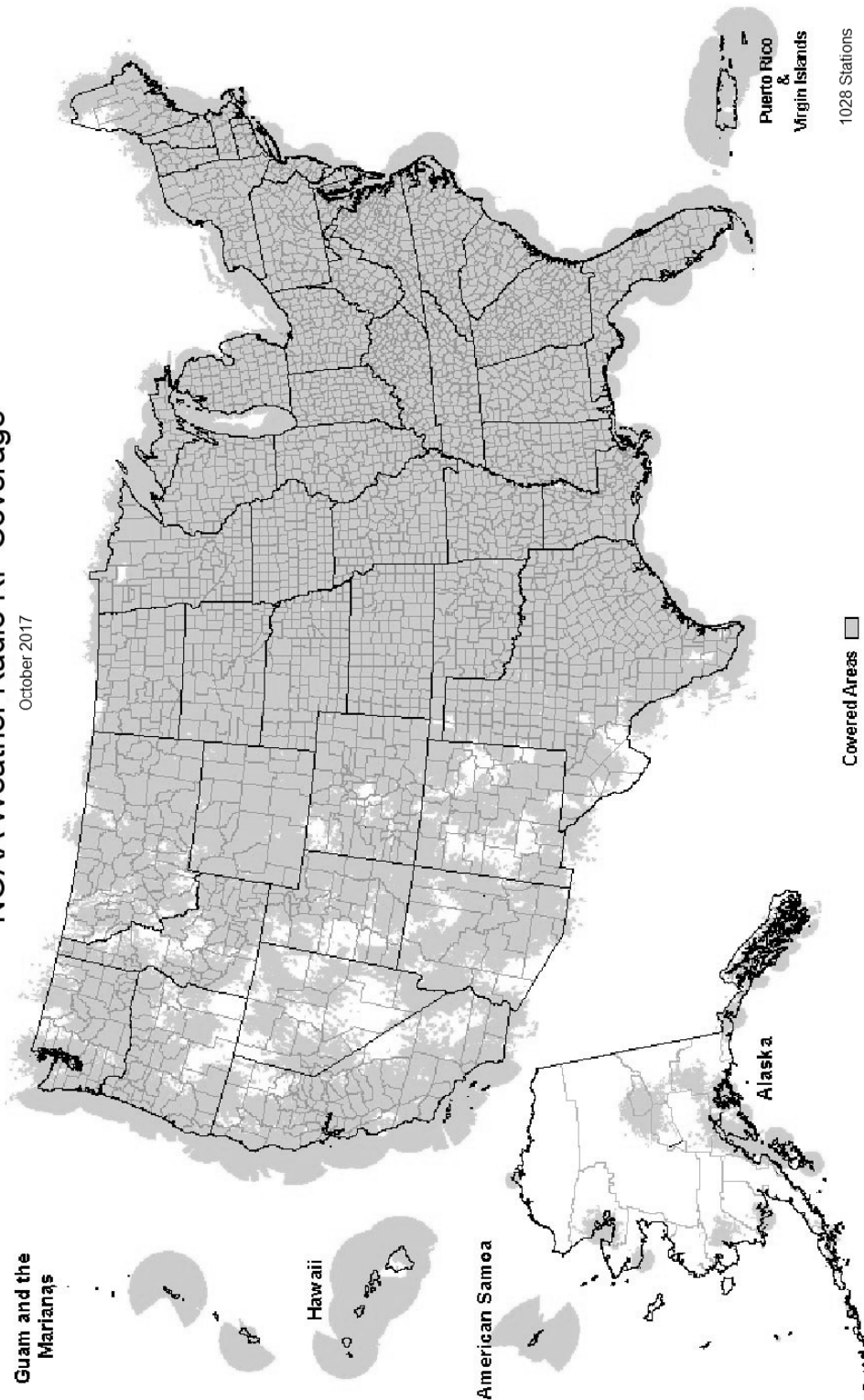
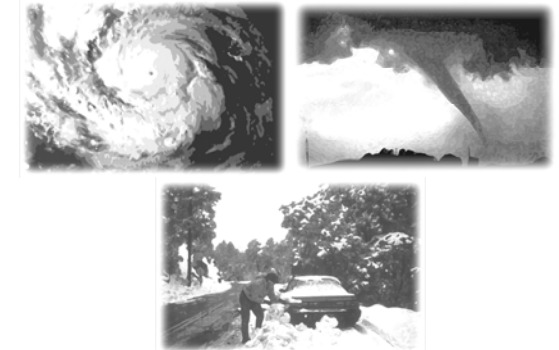


NOAA Weather Radio RF Coverage

October 2017



NOAA/PA 94062
Rev October 2017



The Voice of NOAA's National Weather Service

< Over 1000 Transmitters >

Broadcasting Continuous
Weather Information on the
Following Frequencies:

- 162.400 MHz
- 162.425 MHz
- 162.450 MHz
- 162.475 MHz
- 162.500 MHz
- 162.525 MHz
- 162.550 MHz

U.S. Department of Commerce
National Oceanic and Atmospheric Administration
National Weather Service

<http://www.weather.gov/nwr/>

NOAA WEATHER RADIO

The Voice of NOAA's National Weather Service

<http://www.weather.gov/nwr>

NOAA Weather Radio is a service of the National Oceanic and Atmospheric Administration (NOAA) of the U.S. Department of Commerce. As the "voice of the National Weather Service," it provides continuous broadcasts (24 hours a day) of the latest weather information from local National Weather Service offices. Weather messages are repeated every 4 to 6 minutes and are routinely updated every 1 to 6 hours or more frequently in rapidly changing local weather or if a nearby natural hazardous or manmade condition exists.



The regular broadcasts are specifically tailored to weather information needs of the people within the service area of the transmitter. For example, in addition to general weather information, stations in coastal areas provide information of interest to mariners. Other specialized information, such as hydrological forecasts and other climate data may be broadcast.

During severe weather, National Weather Service forecasters can interrupt the routine weather broadcasts and insert special warning messages concerning imminent threats to life and property. The forecaster can also add special signals to warnings that trigger "alerting" features of specially equipped receivers. In the simplest case, this signal activates audible or visual alarms, indicating that an emergency condition exists within the broadcast areas of the station being monitored, and alerts the listener to turn up the volume and stay tuned for more information. More sophisticated receivers are automatically turned on and set to an audible volume when an alert is received.

In the most sophisticated alerting system, NOAA Weather Radio Specific Area Message Encoding (SAME), digital coding is employed to activate only those special receivers programmed for specific emergency conditions in specific area, typically a county. SAME can activate specially equipped radio and cable television receivers and provide a short text message that identifies the location and type of emergency. SAME is the primary activator for the FCC Emergency Alert System (EAS).

To program NWR SAME receivers with the proper county(s) and marine area(s) of choice, you need to know the 6-digit SAME code number(s) for that county(s). Once you have your code number(s), follow the manufacturer's directions for programming your NWR SAME receiver. You can obtain your SAME code numbers by dialing:

888-NWR-SAME (888-697-7263) – Voice & TTY/TTD Accessible

Under a January 1975 White House policy statement, NOAA Weather Radio was designated the sole Government-operated radio system to provide direct warning into private homes for both

San Juan.....162.400	Big Spring.....162.475	Castle Dale.....162.500	Gilbert.....162.475
RHODE ISLAND	Borger.....162.400	Coalville/ Park City.....162.475	Greggs Knob.....162.500
Providence.....162.400	Brownsville.....162.550	Escalante.....162.425	Hinton.....162.425
SOUTH CAROLINA	Bryan.....162.550	Lake Powell.....162.550	Monterville.....162.525
Aiken.....162.450	Burkeville.....162.425	Logan.....162.400	Moorefield.....162.400
Aynor.....162.400	Carrizo Springs.....162.550	Manti.....162.425	Morgantown.....162.475
Barnwell.....162.500	Center.....162.525	Milford/Cedar City.....162.400	Sutton.....162.450
Beaufort.....162.450	Childress.....162.525	Moab.....162.475	WISCONSIN
Charleston.....162.550	Cisco.....162.500	Monticello.....162.450	Ashland.....162.525
Cheraw.....162.450	Coleman.....162.475	Salt Lake City.....162.550	Baraboo.....162.450
Columbia.....162.400	Corpus Christi.....162.550	St. George.....162.475	Black River Falls.....162.500
Cross.....162.475	Corsicana.....162.525	Tabiona.....162.550	Coloma.....162.400
Florence.....162.550	Cumby.....162.500	Tooele (South Mountain).....162.450	Crandon.....162.450
Georgetown.....162.500	Dallas.....162.400	Tooele (Vernon Hills).....162.525	Dubuque.....162.400
Greenville.....162.550	Del Rio.....162.400	Vernal.....162.400	Fond Du Lac.....162.500
Jasper County.....162.400	D'Hanis.....162.525	Wendover.....162.475	Green Bay.....162.550
Kirksey.....162.425	Dickens.....162.500	VERMONT	Gresham.....162.500
Orangeburg.....162.525	Dilley.....162.500	Burlington.....162.400	Janesville.....162.425
Rock Hill.....162.425	El Paso.....162.475	Castleton.....162.500	Ladysmith.....162.550
Sumter.....162.425	El Paso Spanish.....162.550	St. Johnsbury.....162.425	Madison.....162.550
SOUTH DAKOTA	Fort Worth.....162.550	Galveston.....162.475	Menomonie.....162.400
Aberdeen.....162.475	Galster.....162.550	Gilmer.....162.425	Milwaukee.....162.400
Arlington.....162.525	Gilmer.....162.425	Gonzales.....162.525	New London.....162.525
Faith.....162.475	Guadalupe Mt Nat'l. Park.....162.525	Guadalupe Mt Nat'l. Park.....162.525	Park Falls.....162.500
Firesteel.....162.425	Junction.....162.475	Junction.....162.475	Prairie Du Chien.....162.500
Hot Springs.....162.425	Kerrville.....162.450	Kerrville.....162.450	Racine.....162.450
Lead.....162.525	La Grange.....162.500	La Grange.....162.500	Rhineland.....162.400
Lowry.....162.500	Laredo.....162.550	Laredo.....162.550	Richland Center.....162.475
Mitchell.....162.450	Llano.....162.425	Llano.....162.425	Sheboygan.....162.525
Philip.....162.450	Lubbock.....162.400	Lubbock.....162.400	Sister Bay.....162.425
Pickstown.....162.425	Lufkin.....162.550	Lufkin.....162.550	Spooner.....162.475
Pierre.....162.400	Marietta.....162.525	Marietta.....162.525	Tomah.....162.525
Porcupine.....162.500	Miami.....162.450	Miami.....162.450	Wausau.....162.475
Rapid City.....162.550	Midland/Odessa.....162.400	Midland/Odessa.....162.400	Wausaukee.....162.400
Reliance.....162.525	Milano.....162.525	Milano.....162.525	Winona.....162.425
Sioux Falls.....162.400	Mineral Wells.....162.525	Mineral Wells.....162.525	Withee.....162.425
South Shore.....162.425	Muenster.....162.425	Muenster.....162.425	WYOMING
Wessington.....162.550	New Taiton.....162.450	New Taiton.....162.450	Afton.....162.475
White River.....162.550	Onalaska.....162.500	Onalaska.....162.500	Casper.....162.400
TENNESSEE	Ozona.....162.500	Ozona.....162.500	Cheyenne.....162.550
Bristol.....162.550	Palestine.....162.450	Palestine.....162.450	Cody.....162.400
Centerville.....162.450	Paris.....162.550	Paris.....162.550	Dubois.....162.450
Chattanooga.....162.550	Pecos.....162.450	Pecos.....162.450	Elk Plaza.....162.425
Clarksville.....162.500	Perryton.....162.475	Perryton.....162.475	Evanston.....162.450
Clifton.....162.500	Pharr.....162.400	Pharr.....162.400	Gillette.....162.500
Cookeville.....162.400	Pharr Spanish.....162.475	Pharr Spanish.....162.475	Glendo.....162.450
Dyersburg.....162.500	Plainview.....162.450	Plainview.....162.450	Grant Village.....162.450
Hickman.....162.500	Port O'Connor.....162.475	Port O'Connor.....162.475	Jackson.....162.525
Jackson.....162.550	Richland Springs.....162.525	Richland Springs.....162.525	Kaycee.....162.550
Knoxville.....162.475	Richmond.....162.475	Richmond.....162.475	Kemmerer.....162.525
La Follette.....162.450	Rio Grande City.....162.425	Rio Grande City.....162.425	Lander.....162.475
Lafayette.....162.525	Riviera.....162.525	Riviera.....162.525	Newcastle.....162.475
Lawrenceburg.....162.425	San Angelo.....162.550	San Angelo.....162.550	Pinedale.....162.500
Lobelville.....162.525	San Antonio.....162.550	San Antonio.....162.550	Rawlins.....162.425
Memphis.....162.475	Seguin.....162.475	Seguin.....162.475	Rock Springs.....162.550
Nashville.....162.550	Seminole.....162.425	Seminole.....162.425	Sheridan.....162.475
Shelbyville.....162.475	Sherman.....162.475	Sherman.....162.475	Thermopolis.....162.500
Spencer.....162.450	Stephenville.....162.450	Stephenville.....162.450	Worland.....162.525
Vale.....162.450	Summerfield.....162.500	Summerfield.....162.500	As of October 2017 NOAA is
Waverly.....162.400	Sweetwater.....162.425	Sweetwater.....162.425	operating 1028 stations across the
Winchester.....162.525	Texarkana.....162.550	Texarkana.....162.550	United States and its territories.
TEXAS	Three Rivers.....162.450	Three Rivers.....162.450	
Abilene.....162.400	Throckmorton.....162.425	Throckmorton.....162.425	
Alpine.....162.550	Tomball.....162.400	Tomball.....162.400	
Amarillo.....162.550	Tyler.....162.475	Tyler.....162.475	
Austin.....162.400	Uvalde.....162.425	Uvalde.....162.425	
Bay City.....162.425	Victoria.....162.400	Victoria.....162.400	
Beaumont.....162.475	Waco.....162.475	Waco.....162.475	
	Wichita Falls.....162.475	Wichita Falls.....162.475	
	UTAH	UTAH	
	Bear Lake.....162.500	Bear Lake.....162.500	

The National Weather Service requests your assistance in reporting any outages of NOAA Weather Broadcast Stations.

Please use our Toll Free Number (888) 697-7263 or send an Email to nwroutage@noaa.gov to report the outage.

Doniphan	162.450	Ord.....	162.525	Spencerport	162.525	OKLAHOMA	
El Dorado Springs.....	162.475	Oshkosh	162.525	Stamford.....	162.400	Altus.....	162.425
Eldon	162.550	Scottsbluff.....	162.475	Syracuse.....	162.550	Antlers	162.400
Fredericktown	162.500	Shubert	162.500	Walton	162.425	Ardmore.....	162.525
Gainesville	162.425	Sidney.....	162.500	Watertown.....	162.475	Atoka.....	162.500
Hannibal.....	162.475	Superior.....	162.525	White Hill	162.525	Bartlesville.....	162.425
Hermitage.....	162.450	Trenton	162.500			Broken Bow.....	162.450
Jamestown.....	162.425	Valentine.....	162.450			Chickasha.....	162.450
Joplin.....	162.550	Yankton	162.500	NORTH CAROLINA		Clinton	162.525
Kansas City.....	162.550			Asheville.....	162.400	Enid.....	162.475
La Plata.....	162.525	NEVADA		Buck Mountain.....	162.500	Grove.....	162.525
Lancaster.....	162.550	Battle Mtn.....	162.425	Cape Hatteras.....	162.475	Guymon.....	162.500
Maryville.....	162.425	Bullhead City.....	162.500	Chapel Hill.....	162.550	Lawton	162.550
Medill	162.450	Elko.....	162.550	Charlotte.....	162.475	McAlester.....	162.475
Neosho.....	162.450	Ely.....	162.400	Ellerbe.....	162.400	Oklahoma City.....	162.400
Piedmont.....	162.425	Eureka	162.550	Garner.....	162.450	Oktaha.....	162.525
Springfield.....	162.400	Fernley.....	162.450	Henderson.....	162.500	Ponca City.....	162.450
St. Louis.....	162.550	Fernley.....	162.450	Linville.....	162.450	Stillwater.....	162.500
Summersville.....	162.475	Hawthorne.....	162.475	Mamie.....	162.425	Tulsa.....	162.550
Trenton	162.500	Jackpot.....	162.500	Margarettsville.....	162.450	Wewoka.....	162.550
Wardell.....	162.525	Las Vegas.....	162.550	Mooretsville.....	162.525	Woodward.....	162.500
West Plains.....	162.525	Owyhee.....	162.450	Mount Jefferson.....	162.500		
		Pahrump.....	162.400	New Bern.....	162.400		
MONTANA		Reno.....	162.550	Robbinsville.....	162.525	OREGON	
Baker.....	162.550	Tonopah.....	162.400	Rocky Mount.....	162.475	Bend/Redmond.....	162.500
Belgian Hill.....	162.500	Winnemucca.....	162.400	Saint Pauls.....	162.475	Brookings.....	162.550
Billings.....	162.550			Warsaw.....	162.425	Burns Butte.....	162.475
Bozeman.....	162.500	NEW HAMPSHIRE		Windsor.....	162.525	Cape Blanco.....	162.425
Broadus.....	162.425	Clarksville.....	162.400	Winnabow.....	162.550	Carney Butte.....	162.475
Browning.....	162.525	Concord.....	162.400	Winston-Salem.....	162.400	Coos Bay.....	162.400
Butte.....	162.550	Deerfield.....	162.450			Eugene.....	162.400
Circle.....	162.550	Hanover.....	162.525	NORTH DAKOTA		Florence.....	162.500
Dillon.....	162.475	Holderness.....	162.550	Bismarck.....	162.475	Fossil.....	162.550
Ekalaka.....	162.475	Mt. Washington.....	162.500	Cavalier.....	162.450	Hepner.....	162.425
Forsyth.....	162.525	Pack Monadnock.....	162.525	Dickinson.....	162.400	John Day.....	162.500
Glasgow.....	162.400			Fargo.....	162.475	Klamath Falls.....	162.550
Glendive.....	162.475	NEW JERSEY		Fort Ransom.....	162.525	Medford.....	162.400
Glentana.....	162.525	Atlantic City.....	162.400	Grand Forks.....	162.475	Mt Hebo.....	162.525
Great Falls.....	162.550	Hardyston.....	162.500	Jamestown.....	162.550	Mt. Ashland.....	162.475
Hardin.....	162.450	Southard.....	162.450	Langdon.....	162.500	Neahkahnne.....	162.425
Havre.....	162.400			Minot.....	162.400	Newport.....	162.550
Helena.....	162.400	NEW MEXICO		New Town.....	162.525	Portland.....	162.550
Jordan.....	162.500	Albuquerque.....	162.400	Petersburg.....	162.400	Reedsport.....	162.525
Kalispell.....	162.550	Artesia.....	162.425	Rolla.....	162.475	Roseburg.....	162.550
Lewistown.....	162.500	Carlsbad.....	162.475	Scranton.....	162.525	Salem.....	162.475
Livingston.....	162.525	Des Moines.....	162.550	Sheyenne.....	162.525	Spout Springs.....	162.400
Malta.....	162.475	Farmington.....	162.475	Steele.....	162.400	The Dalles.....	162.400
Miles City.....	162.400	Hobbs.....	162.400	Webster.....	162.425	Tillamook.....	162.475
Missoula.....	162.400	Las Cruces.....	162.400	Williston.....	162.550		
Plentywood.....	162.475	Portales.....	162.475	Willow City.....	162.450	PENNSYLVANIA	
Poplar.....	162.425	Roswell.....	162.450			Allentown.....	162.400
Ryegate.....	162.450	Ruidoso.....	162.550	NORTHERN MARIANA ISLANDS		Altoona.....	162.425
Scobey.....	162.450	Santa Fe.....	162.550	Saipan.....	162.550	Clearfield.....	162.550
Wibaux.....	162.500	Silver City.....	162.425			Coudersport.....	162.500
Winnett.....	162.400			OHIO		Erie.....	162.400
NEBRASKA		NEW YORK		Akron.....	162.400	Harrisburg.....	162.550
Albion.....	162.500	Albany.....	162.550	Athens.....	162.425	Hibernia Park.....	162.425
Bassett.....	162.475	Binghamton.....	162.475	Bridgeport.....	162.525	Honesdale.....	162.450
Beatrice.....	162.450	Buffalo.....	162.550	Carey.....	162.525	Huntingdon.....	162.525
Cambridge.....	162.525	Call Hill.....	162.425	Chillicothe.....	162.500	Johnstown.....	162.400
Chadron.....	162.525	Cattaraugus.....	162.425	Cleveland.....	162.550	Meadville.....	162.475
Columbus.....	162.450	Cooperstown.....	162.450	Columbus.....	162.550	Parker.....	162.425
Grand Island.....	162.400	Elmira.....	162.400	Dayton.....	162.475	Philadelphia.....	162.475
Holdrege.....	162.475	Frewsburg.....	162.525	Grafton.....	162.500	Pittsburgh.....	162.550
Lexington.....	162.425	Gore Mtn.....	162.450	High Hill.....	162.475	Reynoldsville.....	162.500
Lincoln.....	162.475	Highland.....	162.475	Lima.....	162.400	State College.....	162.475
Merna.....	162.500	Ithaca.....	162.500	Mansfield.....	162.450	Towanda.....	162.525
Merriman.....	162.400	Lyons.....	162.475	Marietta.....	162.400	Warren.....	162.450
Mullen.....	162.425	Middleville.....	162.425	New Philadelphia.....	162.425	Wellsboro.....	162.475
Norfolk.....	162.550	Mt. Washington.....	162.450	Otway.....	162.525	Wilkes-Barre.....	162.550
North Platte.....	162.550	New York City.....	162.550	Sandusky.....	162.400	Williamsport.....	162.400
Omaha.....	162.400	Norwich.....	162.525	Toledo.....	162.500		
		Riverhead.....	162.475	Youngstown.....	162.500	PUERTO RICO	
		Rochester.....	162.400			Maricao.....	162.550

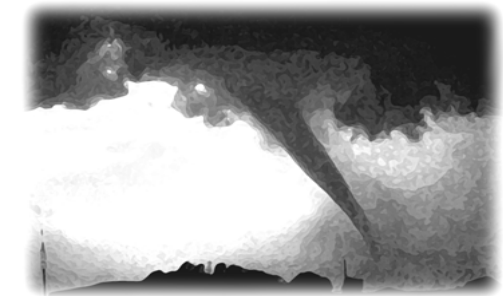
natural disasters and nuclear attack. This concept has been expanded to include warnings for all hazardous conditions that pose a threat to life and safety, both at a local and national level. As a result, NOAA Weather Radio is being better integrated with other National Weather Service systems to provide state and local emergency managers and other warning providers better access to local weather forecast offices, allowing hazard warnings of all types to be broadcast on NOAA Weather Radio within seconds

NOAA Weather Radio currently broadcasts from 1028 stations in fifty states, Puerto Rico, the U.S. Virgin Islands, American Samoa, Guam, and Saipan on seven frequencies in the VHF band, ranging from 162.400 to 162.550 megahertz (MHz). These frequencies are outside the normal AM or FM broadcast bands.

Special radios that receive only NOAA Weather Radio, both with and without special alerting features, are available from numerous manufacturers. In addition, other manufacturers are including NWR capability in a variety of receivers. NOAA Weather Radio capability is currently available on automobile, aircraft, marine, citizens band, and standard AM/FM radios as well as communications receivers, transceivers, scanners, and cable TV.

By nature and design, NOAA Weather Radio coverage is limited to an area within 40 miles of the transmitter. The quality of reception is dictated by transmitter distance, local terrain, and the quality and location of the receiver. In general, those using a high quality receiver on flat terrain or at sea can expect reliable reception beyond 40 miles. Those with standard receivers, surrounded by large buildings in cities and those in mountain valleys may experience little or no reception at considerably less than 40 miles. If possible, a receiver should be tested in the location where it will be used prior to purchase.

NOAA Weather Radio is directly available to a large portion of the U.S. population. The National Weather Service is currently engaged in a program to increase coverage to at least 95 percent of the population.



If you have a question regarding the technical aspects of NOAA Weather Radio such as transmitter location, reception, and characteristics or if you are interested in becoming a partner with the National Weather Service to identify or provide local funding and/or facilities for the installation of a NOAA Weather Radio transmitter, please contact your local National Weather Service Office or send a letter to:

National Weather Service
Attn: Dissemination Systems Branch, W/OPS17
1325 East-West Highway
Silver Spring, MD 20910

The following is a listing of operational stations by state. For specific coverage information for your local area please visit our website at: http://www.weather.gov/nwr/	Sukkwan Island162.425 Tuklung Mtn.162.425 Unalaska162.550 Valdez162.550 Wasilla162.400 Whittier162.475 Wrangell162.400 Yakutat162.400 Zarembo Island162.450	San Diego Marine162.425 San Francisco162.400 San Luis Obispo162.550 San Simeon162.525 Sandberg162.425 Santa Ana162.450 Santa Barbara162.400 Santa Barbara Marine162.475 Sonoma County162.475 Ukiah162.525 Victorville162.500 Yosemite162.450 Yuma162.550	Morrison162.550 Naples162.525 Ocala162.525 Orlando162.475 Palatka162.425 Panama City162.550 Pensacola162.400 Princeton162.425 Salem162.425 Sebring162.500 Sneads162.425 Sumterville162.500 Tallahassee162.400 Tampa Bay162.550 Tea Table Key162.450 Venice162.400 West Palm Beach162.475 Westville162.450	Salmon162.500 Sedgwick Peak162.425 Sun Valley162.450 Twin Falls162.400	ILLINOIS Bloomington162.525 Champaign162.550 Chester162.450 Chicago162.550 Crescent City162.500 Crystal Lake162.500 DeKalb162.550 Dixon162.525 Freeport162.450 Galesburg162.400 Hillsboro162.425 Jacksonville162.525 Jerseyville162.450 Kankakee162.525 Lockport162.425 Macomb162.500 Marion162.425 McLeansboro162.400 Newton162.450 Odell162.450 Paris162.525 Peoria162.475 Plano162.400 Princeton162.425 Quad Cities162.550 Rockford162.475 Salem162.475 Shelbyville162.500 Springfield162.400	Maquoketa162.425 Marshalltown162.500 Milford162.550 Montezuma162.450 Ottumwa162.500 Ringsted162.475 Sarnob162.525 Sioux City162.475 St. Ansgar162.450 Storm Lake162.450 Van Wert162.475 Waterloo162.550	Pineville162.525 Somerset162.550 Stanton162.550 West Liberty162.450 West Madison County162.525 Whitesville162.475 Williamsburg162.500	TRaverse City162.400 West Branch162.450 West Olive162.425 Wolf Lake162.425	ALABAMA Anniston162.475 Arab162.525 Auburn162.525 Birmingham162.550 Brewton162.475 Columbus162.400 Cullman162.450 Demopolis162.475 Dozier162.550 Florence162.475 Greenville162.425 Henagar162.500 Huntsville162.400 Jackson162.500 Louisville162.475 Mobile162.550 Montgomery162.400 Oneonta162.425 Selma162.450 Tuscaloosa162.400 Winfield162.525	AMERICAN SAMOA Mt. Ololele162.550 Pago Pago162.400	ARIZONA Flagstaff162.400 Globe162.500 Grand Canyon162.475 Greer162.525 Kingman162.425 Lake Havasu162.400 Nogales162.500 Payson Gila County N.162.425 Phoenix162.550 Prescott162.525 Safford162.550 Show Low162.400 Tucson162.400 Window Rock162.550	COLORADO Alamosa162.475 Anton162.425 Bethune162.525 Boyer162.450 Canon City162.500 Colorado Springs162.475 Deer Trail162.500 Denver162.550 Dillon162.400 Durango162.425 Eagle162.450 Fort Collins/Ault162.450 Fort Morgan162.525 Fowler162.425 Franktown162.450 Glenwood Springs162.500 Grand Junction162.550 Greeley162.400 La Junta162.500 Lamar162.525 Mead/Longmont162.475 Montrose162.450 North Cottonwood162.500 Pueblo162.400 Springfield162.400 Steamboat Springs162.525 Sterling162.400 Walsenburg162.450 Wray162.475	GEORGIA Americus162.425 Deer Trail162.450 Athens162.400 Atlanta162.550 Augusta162.550 Baxley162.525 Blakely162.525 Blue Ridge162.475 Brasstown Bald162.500 Brunswick162.425 Buchanan162.425 Chatsworth162.400 Clayton162.450 Cleveland162.525 Eastman162.400 Eatonton162.525 Jesup162.450 La Grange162.450 Macon162.475 Metter162.425 Pelham162.550 Sandersville162.450 Summerville162.450 Thomaston162.500 Toccoa162.425 Valdosta162.500 Washington162.500 Waycross162.475 Waynesboro162.425	INDIANA Angola162.425 Bloomington162.450 Edwardsport162.425 Evansville162.550 Fort Wayne162.550 Georgia162.500 Hebron162.450 Indianapolis162.550 Marion162.450 Michigan City162.500 Monticello/Lafayette162.475 Muncie162.425 New Albany162.475 Newport162.425 North Webster162.500 Putnamville162.400 Richmond162.500 Seymour162.525 South Bend162.400	GUAM Guam162.400	HAWAII Hawaii Kai162.450 Kauai162.400 Kulani Cone162.550 Maui162.400 North Kohala162.500 Oahu162.550 South Point162.550	IDAHO Boise162.550 Bonners Ferry162.500 Burley162.475 Driggs162.450 Grangeville162.450 Lewiston162.550 McCall162.475 Largo162.450 Melbourne162.550 Miami162.550	IOWA Burlington162.525 Carroll162.425 Cedar Rapids162.475 Decorah162.525 Delaware162.450 Denison162.550 Des Moines162.550 Essex162.550 Fairfield162.400 Forest City162.500 Fort Dodge162.400 Hancock/Pottawattam162.525 Iowa Falls162.525 Lake Rathbun162.425 Lenox162.450	KANSAS Abilene162.525 Beaumont162.500 Belvidere162.525 Blue Rapids162.425 Chanute162.400 Concordia162.550 Dighton162.525 Dodge City162.475 Ellsworth162.400 Gem162.400 Great Bend162.500 Halls Summit162.425 Hays162.450 Kirwin162.500 Lenora162.425 Meade162.425 Parker162.525 Saint Joseph162.400 Sharon162.400 Topeka162.475 Tribune162.550 Ulysses162.450 Wichita162.550	KENTUCKY Ashland162.550 Beattyville162.500 Bowling Green162.400 Burlkesville162.475 Campbellsville162.525 Covington162.550 East Madison County162.525 Edmonton162.450 Ekron162.450 Elizabethtown162.550 Frankfort162.500 Frenchburg162.475 Harlan162.450 Hazard162.475 Hopkinsville162.450 Horse Cave162.500 Irvine162.475 Jackson162.425 Lexington162.400 London162.475 Madison County162.525 Madisonville162.525 Manchester162.400 Mayfield162.475 Maysville162.425 McKee162.450 Moberly162.525 Monticello162.425 Morehead162.400 Mount Vernon162.425 Owenton162.450 Paintsville162.525 Phelps162.500 Pikeville162.400	KENTUCKY Ashland162.550 Beattyville162.500 Bowling Green162.400 Burlkesville162.475 Campbellsville162.525 Covington162.550 East Madison County162.525 Edmonton162.450 Ekron162.450 Elizabethtown162.550 Frankfort162.500 Frenchburg162.475 Harlan162.450 Hazard162.475 Hopkinsville162.450 Horse Cave162.500 Irvine162.475 Jackson162.425 Lexington162.400 London162.475 Madison County162.525 Madisonville162.525 Manchester162.400 Mayfield162.475 Maysville162.425 McKee162.450 Moberly162.525 Monticello162.425 Morehead162.400 Mount Vernon162.425 Owenton162.450 Paintsville162.525 Phelps162.500 Pikeville162.400	LOUISIANA Alexandria162.475 Baton Rouge162.400 Bogalusa162.525 Buras162.475 Lafayette162.550 Lake Charles162.400 Monroe162.550 Morgan City162.475 Natchitoches162.500 New Orleans162.550 Shreveport162.400	MAINE Caribou162.525 Dresden162.475 Ellsworth162.400 Falmouth162.550 Frenchville162.475 Greenville162.425 Jonesboro Marine162.450 Jeddybemps162.425 Milo162.550 Springfield162.500 Sugarloaf Mtn162.450	MARYLAND Baltimore162.400 Frostburg162.425 Hagerstown162.475 Sudlersville162.500	MASSACHUSETTS Boston162.475 Bourne/Hyannis162.550 Egremont162.450 Gloucester Marine162.425 Mt. Greylock162.525 Worcester162.550	MISSISSIPPI Aberdeen162.450 Ackerman162.475 Booneville162.400 Bude162.550 Carthage162.500 Gulfpport162.400 Hattiesburg162.475 Inverness162.425 Jackson162.400 Leakesville162.425 Magee162.525 Meridian162.550 Oxford162.550	MICHIGAN Adrian / Petersburg162.450 Alpena162.550 Bad Axe162.525 Copper Harbor162.500 Crystal Falls162.475 Detroit162.550 EscaNaba162.500 Flint162.475 Gaylord162.500 Grand Marais162.425 Grand Rapids162.550 Hesperia162.475 Houghton162.400 Manistiquie162.525 Marenisco162.550 Marquette162.550 Mount Pleasant162.525 Munising162.475 Newberry162.450 Onondaga162.400 Petoskey162.475 Plainwell162.475 Sandusky162.450 Sault Ste Marie162.550	MISSOURI Alton162.500 Avilla162.425 Bellflower162.450 Bloomfield162.400 Bourbon162.525 Branson162.550 Cameron162.475 Cape Girardeau162.550 Carrollton162.450 Cassville162.500 Clinton162.500 Columbia162.400 Crocker162.500
--	--	--	--	---	---	--	---	---	---	--	--	---	--	--	---------------------------	--	---	---	---	--	--	---	--	--	---	--	--	--